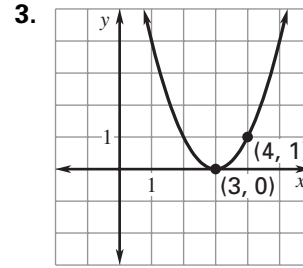
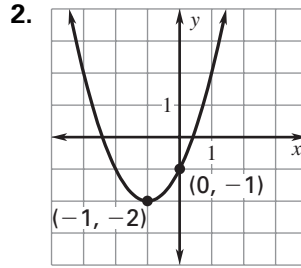
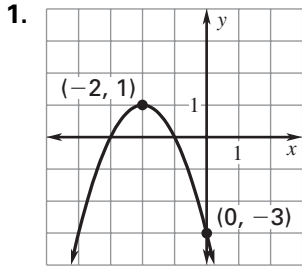


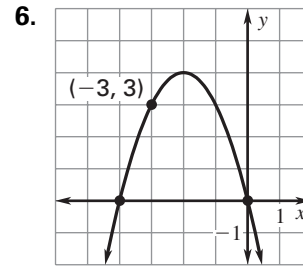
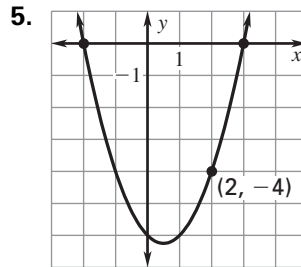
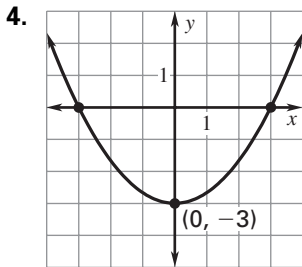
Practice A

For use with pages 306–312

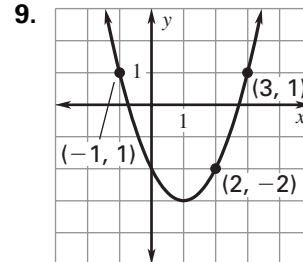
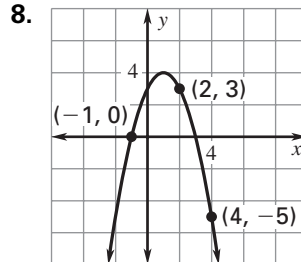
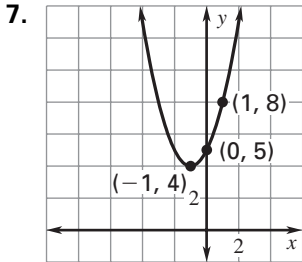
Write a quadratic function in vertex form for the parabola shown.



Write a quadratic function in intercept form for the parabola shown.



Write a quadratic function in standard form for the parabola shown.



Australia's Unemployment Rate The following table shows the number of people (in thousands) that were unemployed in Australia from 1990 to 1995. Assume that t is the number of years since 1990.

Year, t	0	1	2	3	4	5
Percentage of people unemployed, y	6.9	9.6	10.8	10.9	9.7	8.5

- Use a graphing calculator to make a scatter plot of the data.
- Use a graphing calculator to find the best fitting quadratic model for the data.
- Use a graphing calculator to check how well the data fits the model.