

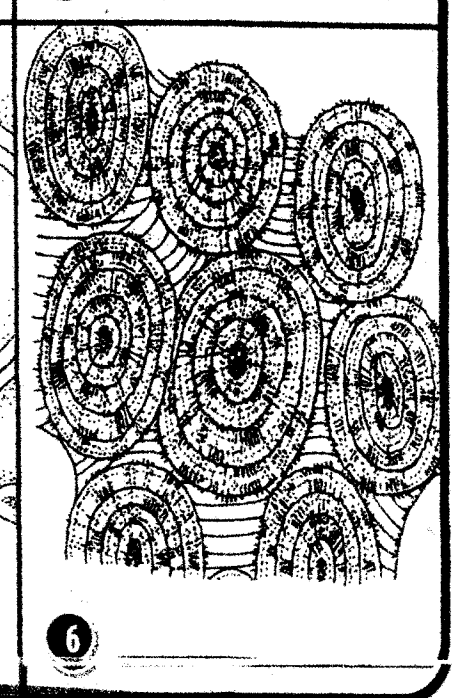
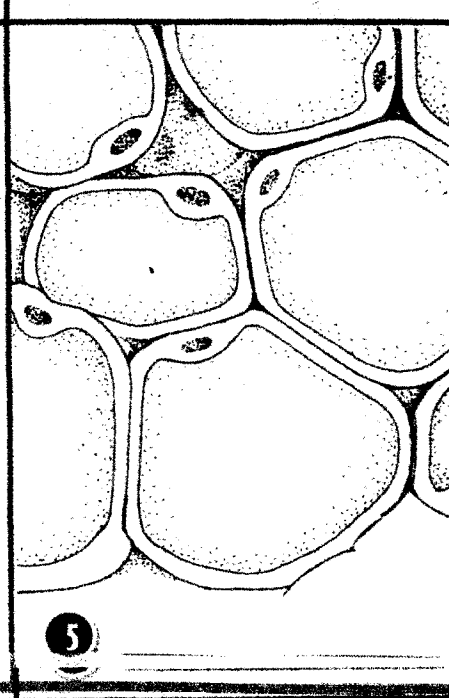
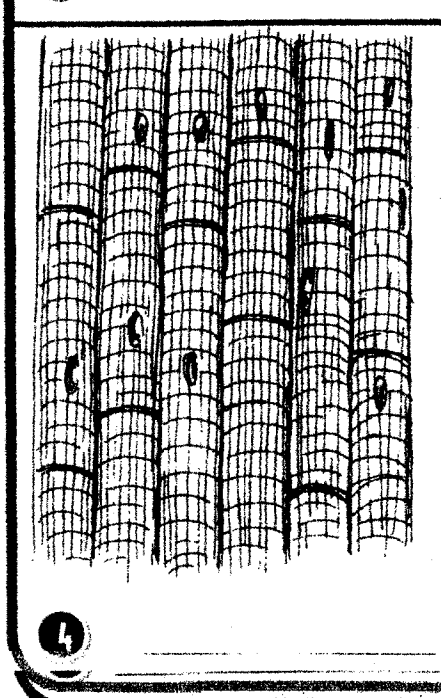
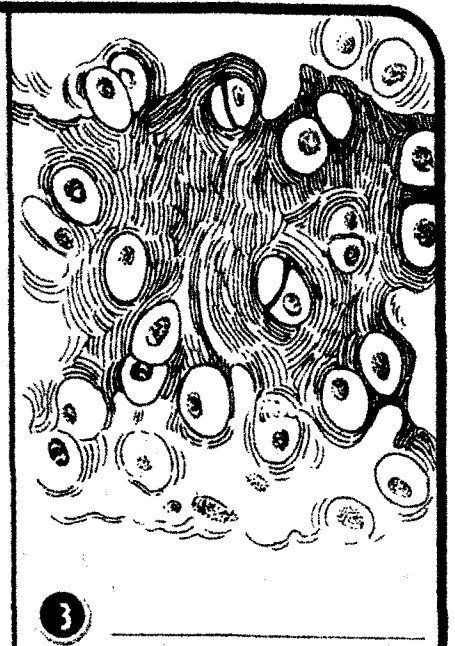
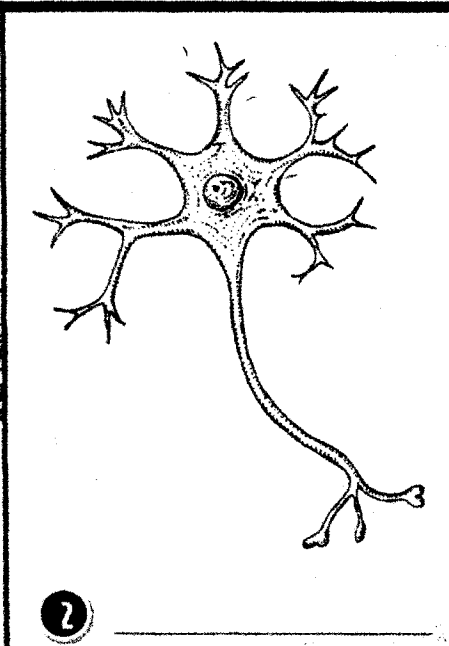
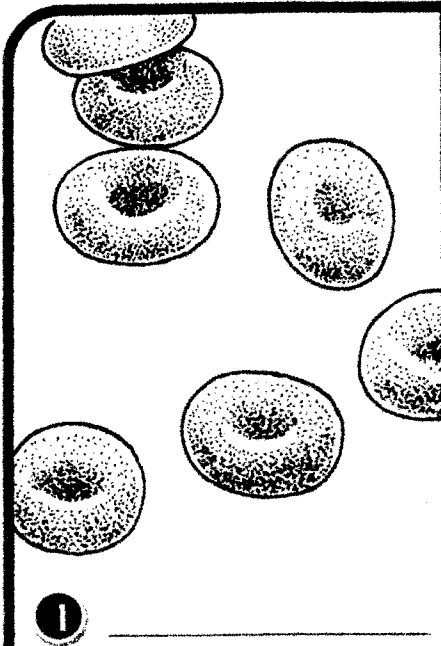
Types of Cells

Cells differ enormously in shape, size, and activities. Yet all cells are alike in three aspects. All start out with a plasma membrane, a region of DNA, and a region of cytoplasm. Many cells have a nucleus; some do not. Use the terms in the word box to label the types of cells.

red blood cells
nerve cells

bone cells
skeletal muscle cells

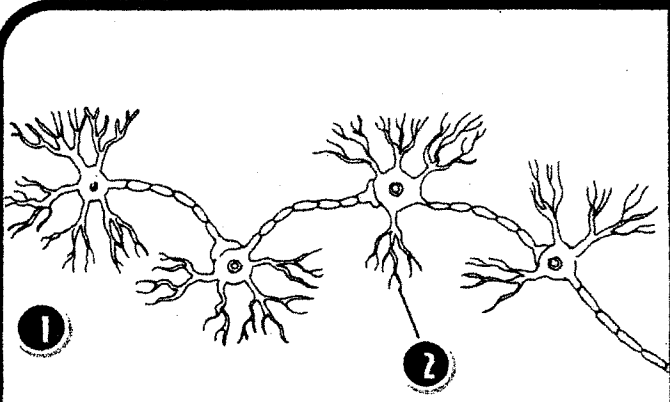
cartilage cells
adipose cells



Types of Tissue

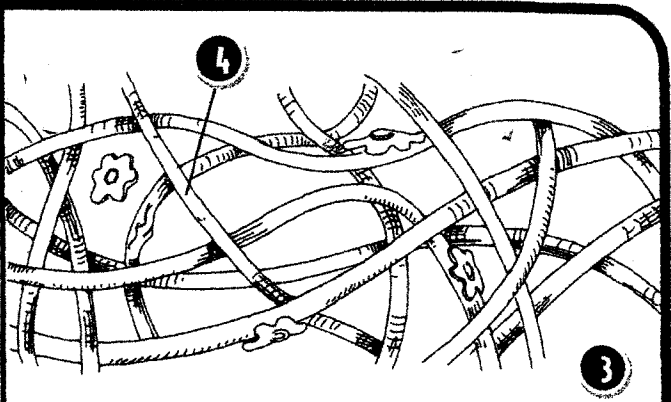
Many of the body's organs are made of a variety of tissues working together. There are four types of tissue: connective, epithelial, muscle, and nerve. Each type has a specialized function. Match the terms in the word box to the diagrams and descriptions below.

connective tissue epithelial tissue muscle tissue nerve tissue
 nerve fiber collagen nucleus cell



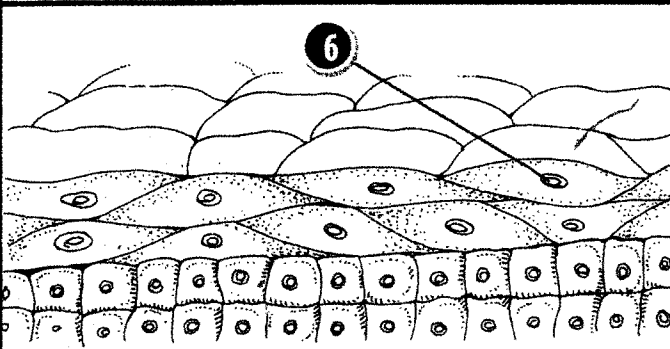
This tissue carries electrical impulses between the brain and body parts.

1 _____
 2 _____



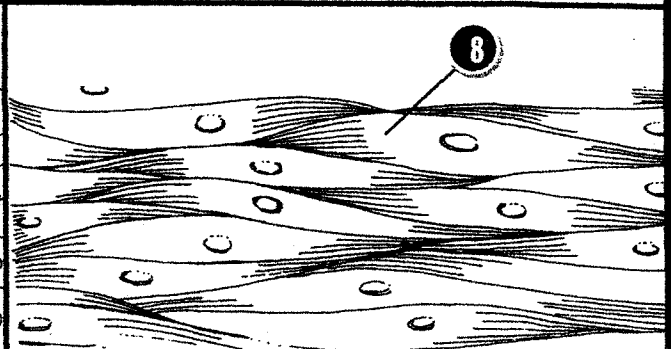
This tissue is made up of relatively few cells. It supports and connects other tissues.

3 _____
 4 _____



This tissue consists of tightly packed cells that cover the skin and line the hollow internal organs.

5 _____
 6 _____



This tissue is made up of cells that can contract and relax.

7 _____
 8 _____