

Believe to Achieve



# The Wave

October 2009

Your monthly newsletter from West Shore Middle School

70 Kay Avenue ♦ Milford, Connecticut ♦ 06460 ♦ (203) 783-3553

## Welcome to West Shore

### Forecasts predict a great year for all Wildcats!

Welcome to West Shore! As your principal, and on behalf of the entire faculty and staff, please know we are honored to have you as part of our West Shore family and look forward to the many happy, interesting and fulfilling days ahead.

The 2009-10 academic year brings many changes to all three middle schools in Milford. Some of the changes will be noticed immediately by many of our returning students, such as the reduction of the number of class periods, from 8 to 7, per day. Another is the lengthening of our lunch period (from 22 minutes to 30 minutes).

Others may not be as obvious, but are equally impactful. One of these is bringing our Spanish teachers into our Core Teacher Teams. In the past, these teachers were considered part of the Humanities team. Due to their specific academic work, this move now enables their collaboration with fellow teachers within a specific team. Ultimately, this work will help us better serve your child.

Another big change for us will be in the conversion from 4 marking periods to 3, otherwise called *trimesters* (see below). We believe working with trimesters will extend the continuity of lessons within each grading period, and ultimately concentrate the learning achieved within each one. We look forward to this new concept and will be reporting on it throughout the year.

If you would like to learn more about the many other changes affecting the middle school system in Milford, please visit our website and click on the link for *Middle School Reform*.

### We're All in This Together!

There *is* one thing I'd like to ask you to do in the year ahead. BECOME INVOLVED!! At West Shore, we have many opportunities for you to become involved, whether you join our active PTA group, serve as a chaperone for a school trip, or simply take an active interest in your child's education. The middle school years are often challenging. Your children may act as if they are pushing you away. On the contrary, this is the very time in their lives they need you most. Ask your child about their day. Tell them about your day. Know where they are and where they're going. Check on homework. Turn off the TV. Declare an 'electronics-free' zone in your home. Make sure there's a clean, organized, quiet place in your home for your child to do homework.

The benefits you will receive from becoming involved will be lifelong ... and immeasurable. I look forward to working with you on this incredible journey. Let's have a great year.

Sincerely,

Vince Scarpetti

## West Shore Trivia



### School Mascot

In case you're new to West Shore, it's important that you know we are the WILDCATS.

### School Colors

The school colors are red, black and silver.

### School Logo

You will see a combination of both the mascot and the colors in our West Shore Logo. We are proud of our logo and you will see it in a variety of places -- most notably on our school sign and on our gym walls.

### West Shore Wearables

Students at West Shore will have the opportunity to purchase logoed spiritwear -- perfect to help your student feel right at home at their school. Sweatshirts, t-shirts, caps -- there's a wide variety to choose from. Watch for the notices about the sale in the Fall.

### Kay Avenue Elementary

Did you know our school once was Kay Avenue Elementary? The school was built back in the '50s and it housed grades K-8 all the way up to the early '90s when the middle school concept was introduced in Milford. By the way, Kay Avenue students were also known as the WILDCATS, too! ♦

### TRIMESTER SCHEDULE

T1: Sept. 2 - Dec. 4  
T2: Dec. 7 - March 19  
T3: March 22 - June 21\*

\*tentative

### PROGRESS REPORTS

Oct. 16  
Jan. 22  
May 7

### REPORT CARDS

Dec. 18  
April 5  
June 21\*

# Open House Drew Packed Crowd

## Parents got a first-hand look at West Shore

The halls of West Shore were packed with parents hustling to their next class on Tuesday, September 8, as attendees at our school's annual Open House program.

Upon arrival, parents reported to their child's homeroom where they received their child's schedule for the 'day.' After a few introductory comments from Principal Vince Scarpetti and the many homeroom teachers, parents had the opportunity to learn what is in store for their child with regard to course work, expectations, and a general overview of the school.



### PTA Table Was 'Hopping'

As mentioned in the cover story, our active PTA was present during our Open House, as well, with members greeting visitors, giving directions to classrooms, accepting membership applications and answering questions. Based on the activity there, we believe this will be one of the best PTA years ever!

### Thank You!

We'd like to thank the staff and faculty members who all helped to make this event a great beginning to our school year. And, of course, thanks to all of the parents, guardians, and caregivers who took the time to visit with us for the evening.

# After School Activities Begin in October



Students will soon begin their after-school activities! Intramural sports, art club, ecology club, drama — these are only a few of the many programs available. Let's have some fun!

### Tuesday and Thursday are After School Activity Days ~ Late Buses Provided!

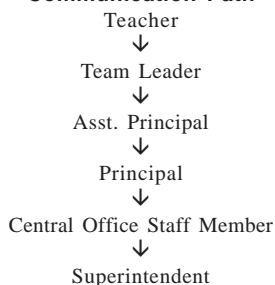
We conduct our after-school programs on Tuesdays and Thursdays each week (except in the case of a holiday or inclement weather — when school is closed). Late buses are available to students on these days only. ♦

## got a question?



When you have a question about your child's classes or work in school, it is best to first contact the person who is closest to the situation. In most cases this is the teacher. If you do not come to resolution or you need to discuss a matter further, we ask you to use the following information path. Using this path will help you get the information you seek quickly and efficiently.

#### Middle School Communication Path



### Upcoming Dates: October

- Oct. 7: Early Dismissal
- Oct. 8: Jonathan Law Orientation for 8th graders, 6:30 p.m. @ Law
- Oct. 9: Magazine Drive Kickoff
- Oct. 12: School Closed/Columbus Day
- Oct. 15: PTA Council (BOE Candidates Forum, 7:00 p.m., @ J. Law)
- Oct. 19: PTA Meeting, 7:00 p.m.
- Oct. 26: Bd. of Ed meeting, 7:00 p.m., @ Parsons



**Statement of Compliance** The Milford Public School system does not knowingly condone discrimination on the basis of race, color, national origin, sex, or handicap in employment or assignments in programs or services provided by the Milford Board of Education. Dr. Harvey Polansky, Mr. Michael Cummings and Philip G. Russell are designated as the employees who will coordinate compliance with Title IX, Title VI and Sec. 504 of the Rehabilitation Act of 1973. They may be contacted by mail at the Milford Board of Education, 70 West River Street, Milford, CT 06460 or by phone at (203) 783-3400. Questions, concerns or comments regarding possible discrimination under the Americans with Disabilities Act (ADA) should be made in person or in writing to the following: Regarding Facilities: Philip G. Russell/Deputy Superintendent of Operations; Regarding Employment: Wendy Kopazna/Director of Human Resources; Regarding Programs: Susan Kelleher/Director of Pupil Personnel Services

# PTA Sets Membership Goal

## *More programming, less fundraising on tap*

Hello and welcome to West Shore! Whether you can devote only a few hours or many -- we welcome you to be a part of our organization -- and believe you will find it interesting, rewarding, and incredibly beneficial. We really mean it when we say, "all are welcome." Please join us! Here's an overview of what's planned for this year with PTA and how you can get involved.

### **NEW THIS YEAR: Gold, Silver and Bronze Memberships!**

Strong membership builds a strong school community. Strong school communities can move mountains!! To encourage membership this year, we decided to offer a multi-level membership platform. For those who are in the position to do so, we are offering three 'premium' levels of memberships -- GOLD (\$100); SILVER (\$75); and BRONZE (\$50). Each of these levels will include your membership card(s), as well as a membership gift (of increasing value). The great part about this is -- 100% of your membership fee will go toward the school organization. With a GOLD, SILVER, or BRONZE membership, nearly ALL of your contribution stays right here at West Shore. Consider your fundraising done for the year!!

And, of course, we will continue to offer our two standard membership levels (1 for \$10, 2 for \$15) so everyone has a chance to become a member of our school's group.

**Our Goal?** We are working to get:

5 Gold memberships: (we already have 2)

5 Silver memberships: (we have none)

5 Bronze memberships: (we have 2)

256 Regular memberships: (we have over 70!)

#### **Pizza Party to the Homeroom with Most Members**

To add to the excitement, we will be charting our progress **by homeroom**. The homeroom with the highest percentage of paid members (through to Thanksgiving) will receive a pizza party for lunch one day in December.

#### **How Do I Sign Up?**

The official sign up form has been included in this issue of *The Wave* for your convenience. Our membership form can also be found on our website.

**Next PTA Meeting**  
**October 19th, 7:00 p.m.**



### **What's Included?**

#### **GOLD: \$100**

Your official paid membership to PTA (local, state and nat'l PTA chapters), the PTA Portfolio, a PTA Canvas Bag, an official PTA keychain, and an official PTA Member Pin.

#### **BRONZE: \$75**

Your official paid membership to PTA (local, state and nat'l PTA chapters), a PTA Canvas Bag, an official PTA keychain, and an official PTA Member Pin.

#### **SILVER: \$50**

Your official paid membership to PTA (local, state and nat'l PTA chapters), an official PTA keychain, and an official PTA Member Pin.

Please turn the page to learn more about what PTA has planned for this year!

### **PTA Board Contact Info**

**Kathy Bonetti**, President  
876-2094  
kbonetti@att.net

**Doug Hill**, Treasurer  
874-8243  
doughill@optonline.net

**Holly Mesavage**, Recording Secretary  
783-3553  
hmesavage@milforded.org

**Pete DeLeo**, Vice President  
783-0548  
pjdeleo@optonline.net

**Jane Twombly**, Corresponding Secretary  
878-5769  
jtwombly@optonline.net

**Vince Scarpetti**, Principal  
783-3553  
vscarpetti@milforded.org

## PTA (cont.)

### Family Fun Events On Tap Movie Nights, Family Fitness, Motivational Speakers – and MORE!

One of our goals this year is to conduct several Family Friendly events. It seems we have fewer and fewer opportunities to gather with family members and friends as our children get older. To combat this -- and to have a lot of fun --we have committed ourselves to conducting more of these events at the middle school level. Here's a sneak peek at what we're planning.

#### **A Sporting Event: October -- West Shore Night with the Soundtigers**

Our first event of the year: West Shore Night With the Soundtigers on October 25th!!! This AHL team kicked off their home opener with a win on Saturday night - so they're already off on the 'right foot!' See details in the box on the right for more!

#### **Reflections Art Show: January**

This evening event will resemble a formal art gallery opening -- with our entries for the PTA Reflections Art Contest being displayed for all to see! Details to come.

#### **Motivational Speaker: February**

ANYTHING IS POSSIBLE. We've all heard these words before -- but sometimes we lose touch with our plan and the stumbling blocks in our path turn into boulders!! We plan to conduct a wonderful evening presentation with a speaker who has faced challenges and overcome them. Sure to be a crowd pleaser for young and old alike.

#### **Movie Night: March**

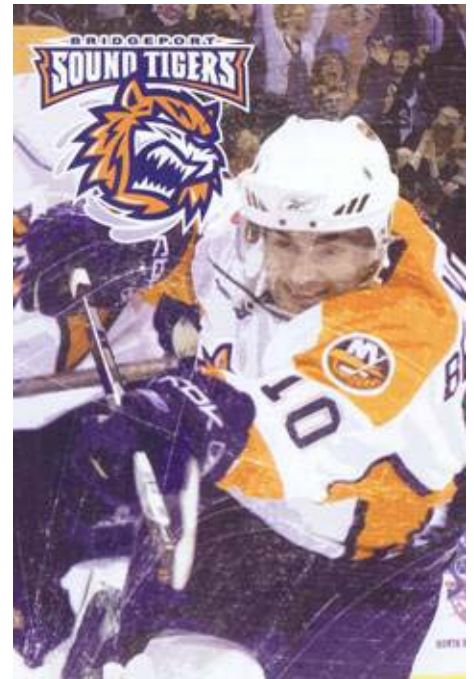
It's March. It's still cold outside. And the 2nd marking period just ended. What to do? Go to Movie Night at West Shore!! We will gather in the caf and enjoy a classic film, complete with popcorn and candy sales going on at the back of our 'theater.' More about this as we get closer.

#### **Family Fitness Fun Night: April**

Fitness doesn't have to be all sweat and drudgery! This Family Fitness Fun Night is designed to engage everyone in the West Shore Family. To be held in the spring -- more details will come as we get closer.

#### **Job/Career Fair: May**

Students at this age begin to wonder what their future may hold. We will be assisting them in their quest by conducting our first-ever Job & Career Fair. This fair will feature representatives from a wide variety of occupations. Based on and similar to a college fair, students will be able to stop by tables of occupations that interest them -- and be able to ask questions of our visitors. (What kinds of courses did you need to take? Did you have to go to college? Where did you go? What is your work day like?). We believe this one will be very engaging -- for everyone involved!



## West Shore Nite with the Bridgeport Soundtigers October 25th Tickets now on sale

Let's Go Tigers!!! Our first official family event of the year will be West Shore Night with the Sound Tigers. Tickets are \$15 per person; the game will be played at the Bridgeport Harbor Yard Arena. West Shore 'Wildcats' will have their own section and we will have the opportunity to visit with the players immediately following the game to get their autographs.

In addition, arrangements are being made to have our own West Shore students sing the National Anthem at the arena. Let's all go to support our kids -- and have fun at the game. Ticket order deadline is October 20th. Please send in a completed order form and payment in an envelope marked West Shore Soundtigers Game. Tickets will be distributed a few days before the game. If you have any questions, please contact **Kathy Bonetti** at 876-2094 or [kbonetti@att.net](mailto:kbonetti@att.net).

# It's Time to Send in Your Box Tops!!

**B**efore you throw out the next empty cereal box or wrapper in the trash, take a moment to see if there's a distinctive Box Tops for Education label on the packaging!

These little labels are worth 10¢ each

-- and when we combine them with all the other labels collected by our West Shore families, it can really add up!



Our Box Tops Chairperson **Tina Saller** is gearing up for our next submission -- so it's time to SEND IN THOSE BOX TOPS!!

## Prize for the Homeroom that Collects the Most!

Simply put all the labels you've collected into a baggie and send them in with your child and have him/her give them to their HOMEROOM TEACHER. We wanted to make it 'a little interesting' this year, so we will be rewarding the homeroom class that collects the most Box Tops with a prize. So -- send in those Box Tops and help your child's homeroom win. The DEADLINE to send in your Box Tops for this cycle is OCTOBER 23rd. Thank you for your support. ♦

**Register and click in for a chance at 500,000 Box Tops!!**

**Visit [www.thebigclip.com](http://www.thebigclip.com)**

**(by October 31st)**

**I**t's called the **Big Clip**, but it really should be called the **Big Click!!** Go online to [www.thebigclip.com](http://www.thebigclip.com) before OCTOBER 31st and register for the Big Clip. Our school has the chance to win a Grand Prize of 500,000 Box Tops (a value of

\$50,000!!!). Two additional 1st place prizes will also be awarded, each for 250,000 Box Tops (a value of \$25,000 each!). You may 'click in' once a day all the way up to October 31st -- so start clicking! The more we enter, the better our chances!! ♦

## Deadline for 1st Submission of the Year: OCTOBER 23rd!

### Register Your 'Price Plus' Card ASAP!

If you are a customer of ShopRite supermarkets, it's time to register your Price Plus card on behalf of West Shore Middle School. As you do your grocery shopping all year long, program operators keep track of the dollars you spend at ShopRite and then apply a corresponding number of points that we will use in the spring to 'purchase' a wide variety of equipment and other items for our school. The only thing you have to do is use your PricePlus card!



#### 3 Ways To Register

1. You can register your Price Plus card in person the next time you go to ShopRite. Just visit the Courtesy Desk.

2. You can go online ([www.shoprite.com/EducateMain.aspx](http://www.shoprite.com/EducateMain.aspx)). Follow the directions there.

3. You can e-mail your Price Plus card number to Sue Garlock, ([dsjegar@att.net](mailto:dsjegar@att.net)). Make sure you include all 12 numbers on your Price Plus Card (it will begin with a '4'). Sue will register your card for you! ♦

#### FREE Stuff We Got Last Year!

- Bretford Tripod Screen 70" x 70"
- 5' Adjustable Table
- 42" Utility Cart w/ Electrical Assembly
- 240 count Crayola Colored Pencil Kit

### Teen Nights Now Open at United Church of Christ Devon

The United Church of Christ Devon is proud to announce the opening of their Youth Center Program on Friday nights, designed for middle school students. Children of all faiths are welcome -- this is a non-religious program; quite simply it is a place for kids to 'hang out' with friends in a place that is safe, fun, tobacco- and alcohol-free. Parent advisors are on hand to supervise.

Entrance is FREE. The center has Wii, Guitar Hero, Ping Pong, Air Hockey, Board Games and much more. Parents are also welcome to stop in and see what the center has to offer.

The center is open Friday nights from 7:00 - 9:30 p.m. Questions may be directed to Kathy or Mike Attruia at 882-8461 or Pastor Karl Duetzman at 878-4685. ♦

# West Shore Fundraiser 'Unique' -- Starts Friday!

## 40% of Student's Sales Goes into 'Personal' Student Spending Account

Get ready to begin our fast and unique fundraiser for our school! Our Annual Magazine Fundraiser is unique in the fact that 40% of your child's sales goes into his or her own personal West Shore Student Activity Account. As the year progresses, your child can then spend those funds (with a parent's authorization) on school authorized items, such as the purchase of a school yearbook, West Shore apparel, tickets to school events and field trips.

As is standard procedure, we do not encourage students to sell magazines door-to-door. Rather, we encourage your child to visit family and friends only in their quest to sell subscriptions or (for those of us who are returning customers) magazine renewals.

### What Kinds of Magazines are Available?

When you see the brochure and catalogue materials that will come home with your

child on Friday, you will be amazed at the wide variety of topics and prices that are available. Help your child learn the responsibility of handling money -- and the value of earning cash for the things they want -- on their own!



### And ... Just to Make it Interesting

In order to 'kick it up a notch' at school, drive organizers have developed an incentive program that goes along with the campaign, offering tons of

prizes that are in high demand. The students really get excited as the days of the contest go by -- ask your student about it once the drive begins!

### Dollars Doing Double Duty!

At the end of the year, all unused funds in the West Shore Student Activity Account then continue to work for us -- as they are then deposited into the PTA Operating Budget to be used the following year. This way, everyone wins! Watch for the details coming home Friday. ♦

## Parents! Can you Spare an Hour or Two?

Part of helping our kids reach their goals requires some parent involvement. While the QSP Marketing firm handles most of the details connected to the Magazine Drive, we depend on the parent community to volunteer a few hours of their time to help operate the program.

There are two basic functions we fulfill -- one is the tallying of the sales that the kids turn in on "Turn In" days. This job requires volunteers to tally and verify the sales each student turns in and account for them on a master sheet. This work does not necessarily have to be conducted during the school day -- but it must be completed and returned to school by the next morning.

The other task is manning the "Prize Store" which is conducted the day after each Turn In Day. Volunteers collect tickets earned by each student and assists them in collecting their prizes. This is done during the lunch waves: 10:30 - 12:30 p.m. on Prize Days.

Can you find it in your heart to volunteer for one of these sessions? Here are the days we will need help:

Turn In Day:	October 14
Prize Store Day:	October 15
Turn In Day:	October 16
Prize Store:	October 19
Turn In Day:	October 20
Prize Store Day:	October 21
Turn In Day:	October 22
Prize Store Day:	October 23

Please contact **Kathy Bonetti** via e-mail at [kbonetti@att.net](mailto:kbonetti@att.net) or at 876-2094. Thank you in advance for your help. ♦

**Magazine Drive Starts Friday,  
October 9th**

# No Child Left Behind report in for West Shore

**WSMS is Proficient in 12 out of 16 Categories; 4 sub-categories need work**

Dear Parents and Students,

Last month, the Milford Public School district received its annual **Adequate Yearly Progress** report, prepared under the auspices of the **No Child Left Behind Act of 2001**. The release of this report is required by law to show all of the members of our community the achievement level of all schools and students in the district.

Like with most statistical reports, there is some good news to share from this year's release and some areas in which we will need to improve. Let me take you through the details of this report, (the full two-page report is attached to this newsletter).

## Four Areas Measured

In Connecticut, we use the scores our students receive on the Connecticut Mastery Test (CMT). Every student in Connecticut in Grades 3 - 8 takes the CMT in the Spring. The report we are discussing here reflects the scores our students received on the CMT administered in March.

There are four areas that are measured on our AYP report: *Participation Rate*, *Mathematics* and *Reading*. A fourth category -- *Writing* -- is used as Connecticut's optional parameter.



### Participation Rate: Achieved

Required Target Level: 95.0%  
 Our Participation - Math: 99.8%  
 Our Participation - Reading: 100%

The federal government requires that at least 95% of the total number of students in the entire school take the test. In our case, we exceeded the target on both the math and the reading tests.

### Mathematics Benchmark: Achieved

Minimum Proficient Level: 82.0%  
 Our Proficient Level in Math: 89.2%

The federal government sets the minimum level of proficiency in mathematics, nation-

	Federal Min. Req.	West Shore (Whole School)
<b>Participation Rate</b>		
<i>Math</i>	95%	99.8% ✓
<i>Reading</i>	95%	100% ✓
<b>Mathematics</b>	82%	89.2% ✓
<b>Reading</b>	79%	84.5% ✓

ally, at 82%. At West Shore we far outpaced the minimum with 89.2% of our students achieving the status of Proficient or beyond. This is exceptionally good news and indicates our math program is right on track and reflects the standards our students are expected to master in middle school.

### Reading Benchmark: Achieved

Minimum Proficient Level: 79%  
 Our Proficient Level in Reading: 84.5%

The minimum level of proficiency set by the federal government in reading, nationally, is 79%. Our school surpassed the national standard with 84.5% of our student body achieving proficiency in reading.

### Writing Benchmark: Achieved

Required Target Level: 70%

While we do not receive a reported score on the writing portion of the CMT test, the federal government only requires that 70% or more of our student body scores at the level of 'Basic' or above. In Connecticut, we use the scores from our Degrees of Writing Power exam. We have also met this target.

### How Could We Surpass the Target in Each Category -- Yet Not Achieve Adequate Yearly Progress?

Upon looking at the report, you will notice at the very top that it indicates West Shore DID NOT achieve Adequate Yearly Progress as defined by the federal government. How can that be if *we've surpassed the minimum requirement in each and every category?*

Identifiable sub-groups with 40 students or

more must have their scores separated out and reported again as a 'sub-group' score. At West Shore, our reportable sub-groups are the Hispanic sub-group (54 students), Students with Disabilities (83), and Economically Disadvantaged (132). The sub-group scores are also measured using the same benchmarks as detailed earlier in this article. Unfortunately, when Adequate Yearly Progress is not achieved in sub-group categories then the whole school also does not receive 'Achieved' status either.

At West Shore we did not achieve AYP for the following sub-categories:

Hispanic: Reading 76.9%  
 Students With Disabilities: Math 65.9%  
 Students With Disabilities: Reading 54.2%  
 Econ. Disadvantaged: Reading 73.8%

Our improvement plan will continue to focus on reading, writing and mathematics. The district has also established a number of new initiatives and programs to address the same needs on a districtwide level, including the Reading for Success program, special education services, and several additional reading programs. We are proud of our students, staff and all those who support our efforts. The results reflect the dedication to learning of the entire West Shore Middle School community. We will continue to work diligently to maintain and improve our students' academic achievement. We know we can count on your continued support.

If you have any questions regarding these reports, please feel free to contact me.

Respectfully,

Vince Scarpetti  
 Principal, West Shore Middle School

# What Do You Have For Homework??

## Assignments now posted online every day

### Scenario 1:

Parent: "So, what do you have for homework tonight?"

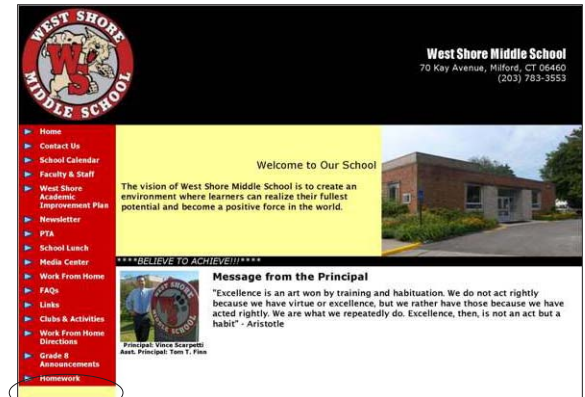
Child: "Nothing."

### Scenario 2:

Your child brings home the materials he/she is supposed to be working on -- but has forgotten what the exact assignment was.

Great News! We are now posting all homework assignments ONLINE every day. Students and parents alike can go to the West Shore website and click on the Homework link at the very bottom of the red topic panel on the left. Once there, click on the individual teacher links as well as the team color link to find a listing of the homework assignments.

While you're there, you will also find a wealth of information specifically related to our school, including PTA news, Upcoming Dates, Calendars, Faculty Websites, and much, much more. Check it out!



Click here!

### How to Access the West Shore Website

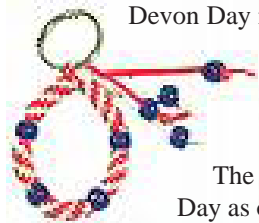
1. Go to the District Website: [www.milforded.org](http://www.milforded.org)
2. In the center of the page, click on the drop down feature for Middle Schools.
3. Select West Shore.
4. Click on the top listing for Website.

You should now be on the West Shore Homepage.

[www.milforded.org](http://www.milforded.org)

## Devon Day Mixes Beautiful Weather with Memories of Summer Camp!

Combine a beautiful day in our beloved Devon with the likes of a country fair and what do you get? The 7th Annual Devon Day met great success with hundreds of people stopping by and enjoying all that the event had to offer. Rides for the kids, items for sale, and food galore.



The West Shore PTA participated in Devon Day as one of the corps of Non-Profits. We were able to sell magnets, sign up a few new members and

just chat with parents of the Devon community. Additionally, we operated a craft table for kids of all ages to make lanyards or beaded bracelets. For our efforts, the folks coordinating the event have given us a check for \$250! A huge thank you goes out to the following individuals who stepped up to the plate and manned our booth throughout the day: **Susan Garlock, Donna Garlock, Jane Twombly, Carolyn Alling, Kathy Bonetti, Cathy Betz, and Eunice Marrero.**



West Shore PTA-ers Donna Garlock, Kathy Bonetti, and Jane Twombly get busy setting up the PTA booth.



### Couple of notes:

Thank you to parent **Alyson Rourke**, outgoing PTA Co-President. Alyson always was first to offer a helping hand, a friendly ear, and worked tirelessly to move the PTA mission forward. Thank you Alyson! We'll see you next year!

Thank you to parent **Shauna Paton**, outgoing PTA Treasurer. Shauna did a fabulous job keeping track of our finances all year long. Thank you, Shauna!

Thank you to parent **Shally Longbardi**, outgoing PTA Corresponding Treasurer. Shally provided constant assistance to everyone at West Shore -- whether it was to help teachers, operate the Book Fair, conduct the Magazine Drive. Shally was always there to offer their assistance. Many thanks, Shally!

Thank you to parent **Martha Bogucki**, who graciously audited our books over the summer to make sure we started with a clean slate. Great work, Martha -- we thank you!



# Preliminary Adequate Yearly Progress (AYP) Status for the 2008-09 School Year: Not Achieved

Based on the spring 2009 Connecticut Mastery Test (CMT)



## This school is identified as in need of improvement; Year Improvement = 1

### Milford School District

### West Shore Middle School

Adequate Yearly Progress (AYP) Targets:	Participation Rate		% At or Above Proficient		% At or Above Basic
	Mathematics	Reading	Mathematics	Reading	Writing
	95%	95%	82%	79%	70% (or annual improvement)

Subgroup <sup>1</sup>	Participation Rate <sup>2</sup>							% At or Above Proficient							
	Mathematics			Reading			AYP Target Met?	Mathematics				Reading			
	Current	2 Year Avg.	3 Year Avg.	Current	2 Year Avg.	3 Year Avg.		Unadjusted	Confidence Interval	Adjusted	AYP Target Met?	Unadjusted	Confidence Interval	Adjusted	AYP Target Met?
<b>Whole School</b> (n = 561)	99.8	100	100	100	100	100	Yes	85.2	4	89.2	Yes	79.5	5	84.5	Yes
<b>American Indian</b> (n = 1)	Fewer than 40 students in this subgroup							Fewer than 40 students in this subgroup				Fewer than 40 students in this subgroup			
<b>Asian American</b> (n = 39)	Fewer than 40 students in this subgroup							Fewer than 40 students in this subgroup				Fewer than 40 students in this subgroup			
<b>Black</b> (n = 34)	Fewer than 40 students in this subgroup							Fewer than 40 students in this subgroup				Fewer than 40 students in this subgroup			
<b>Hispanic</b> (n = 54)	100	100	100	100	100	100	Yes	72.2	14.3	86.5	Yes	61.1	15.7	76.8	No
<b>White</b> (n = 433)	99.8	100	100	100	100	100	Yes	86.6	4.3	90.9	Yes	82	5.2	87.2	Yes
<b>Students with Disabilities</b> <sup>3</sup> (n = 83)	100	100	100	100	100	100	Yes	53.8	12.2	65.9	No	41.9	12.3	54.2	No
<b>English Language Learners</b> (n = 11)	Fewer than 40 students in this subgroup							Fewer than 40 students in this subgroup				Fewer than 40 students in this subgroup			
<b>Economically Disadvantaged</b> (n = 132)	100	99	100	100	100	100	Yes	75.8	8.9	84.6	Yes	63.6	10.2	73.8	No

<b>Additional Academic Indicator: Writing, % At or Above Basic</b>	<b>AYP Target Met?</b>	<b>Yes</b>
--	------------------------	------------

<sup>1</sup> It is possible for a subgroup to be of sufficient size (40 or greater) for the calculation of the participation rate, but not of sufficient size (fewer than 40) for the calculation of the percent at or above proficient. This is due to the omission of absent students from the calculation of the percent at or above proficient. If a school does not have the required 95 percent participation with 40 or more students, it will not have made AYP, regardless of the subgroup size for the percent at or above proficient calculation.

<sup>2</sup> For any school or subgroup that did not meet the 95 percent participation rate criterion, a two- and three-year average participation rate using 2009, 2008, and 2007 CMT is calculated. If the two-year or three-year average was greater than the current participation rate, it was used for the AYP analysis.

<sup>3</sup> Students who were identified as a student with a disability on the 2007 and/or 2008 CMT, but not on the 2009 CMT, were included in the percent at or above Proficient calculation for this subgroup.

Milford School District Final Adequate Yearly Progress Status, 2008-09 School Year: Not Achieved



*This district has been identified as in need of improvement; Year Improvement = 2*

Based on the 2009 Connecticut Mastery Test (CMT) results,  
and the 2009 Connecticut Academic Performance Test (CAPT) results



**Connecticut Mastery Test (CMT) Results**

Subgroup	Participation Rate (95 % needed)							% At or Above Proficient								
	Mathematics			Reading			AYP Target Met?	Mathematics (82 % needed)				Reading (79 % needed)				
	Current	2 Year Avg.	3 Year Avg.	Current	2 Year Avg.	3 Year Avg.		Unadjusted	Confidence Interval	Adjusted	AYP Target Met?	Unadjusted	Confidence Interval	Adjusted	AYP Target Met?	
Whole District	99.8	100	100	99.9	100	100	Yes	88.6	2.4	91	Yes	83.1	3.4	86.5	Yes	
American Indian	Fewer than 40 students in this subgroup							Fewer than 40 students in this subgroup				Fewer than 40 students in this subgroup				
Asian American	100	100	100	100	100	100	Yes	95.9	3.7	99.6	Yes	87.6	6	93.6	Yes	
Black	99.3	100	100	100	99	100	Yes	78.3	9.7	86.8	Yes	70	9.7	79.7	Yes	
Hispanic	100	100	100	100	100	99	Yes	75.4	7.5	82.9	Yes	65.4	8.5	74	No	
White	99.8	100	100	99.8	100	100	Yes	89.4	2.5	91.9	Yes	84.6	3.5	88	Yes	
Students with Disabilities	100	99	100	100	100	99	Yes	58.6	5.6	64.2	No	46.3	6.1	52.4	No	
English Language Learners	Fewer than 40 students in this subgroup							Fewer than 40 students in this subgroup				Fewer than 40 students in this subgroup				
Economically Disadvantaged	99.6	99	100	99.8	100	100	Yes	78.6	4.9	83.5	Yes	66.6	5.9	72.5	No	
Additional Academic Indicator: Writing		AYP Target Met?					Yes									

**Connecticut Academic Performance Test (CAPT) Results**

Subgroup	Participation Rate (95 % needed)							% At or Above Proficient								
	Mathematics			Reading			AYP Target Met?	Mathematics (80 % needed)				Reading (81 % needed)				
	Current	2 Year Avg.	3 Year Avg.	Current	2 Year Avg.	3 Year Avg.		Unadjusted	Confidence Interval	Adjusted	AYP Target Met?	Unadjusted	Confidence Interval	Adjusted	AYP Target Met?	
Whole District	99	95.9	97.3	99	96.9	96.6	Yes	74.5	5.4	79.9	Yes	77.4	7	84.4	Yes	
American Indian	Fewer than 40 students in this subgroup							Fewer than 40 students in this subgroup				Fewer than 40 students in this subgroup				
Asian American	Fewer than 40 students in this subgroup							Fewer than 40 students in this subgroup				Fewer than 40 students in this subgroup				
Black	Fewer than 40 students in this subgroup							Fewer than 40 students in this subgroup				Fewer than 40 students in this subgroup				
Hispanic	Fewer than 40 students in this subgroup							Fewer than 40 students in this subgroup				Fewer than 40 students in this subgroup				
White	99	97	97.9	97	97.3	96.8	Yes	78.3	5.5	83.8	Yes	79.6	7.1	86.8	Yes	
Students with Disabilities	96	91.8	95.3	99	91.8	94.04	Yes	30.3	12.6	42.9	No	42.3	14.1	56.4	No	
English Language Learners	Fewer than 40 students in this subgroup							Fewer than 40 students in this subgroup				Fewer than 40 students in this subgroup				
Economically Disadvantaged	97	94.1	96.4	98	94.1	95.2	Yes	56.7	15.2	71.8	No	60.7	15.6	76.2	No	
Additional Academic Indicator: Graduation Rate		AYP Target Met?					Yes									



# WEST SHORE PTA MEMBERSHIP FORM 2009-10

**GOLD MEMBERSHIP** ..... \$100

*For a \$100 membership, you will receive a beautiful PTA Portfolio, with zippered edging, (holds a standard 8 1/2" x 11" notepad), a handy PTA Canvas Bag, an attractive PTA-logoed Keychain, an official PTA Member pin (wear it to meetings!) and, of course, a paid membership to organization.*

**SILVER MEMBERSHIP** ..... \$75

*For a \$75 membership, you will receive a handy PTA Canvas Bag, an attractive PTA-logoed Keychain, an official PTA Member pin (wear it to meetings!) and, of course, a paid membership to the organization.*

**BRONZE MEMBERSHIP** ..... \$50

*For a \$50 membership, you will receive an attractive PTA-logoed Keychain, an official PTA Member pin (wear it to meetings!) and, of course, a paid membership to the organization.*

**REGULAR MEMBERSHIP (SINGLE)** ..... 1/\$10

**TWO ADULTS IN HOUSEHOLD/MEMBERSHIP:** ..... 2/\$15  
*[please provide the information for both adults on the lines below]*

NAME: .....

ADDRESS: .....

.....

CITY, STATE, ZIP .....

PHONE NUMBER (Home): .....

PHONE NUMBER (Cell): .....

E-MAIL ADDRESS (Home): .....

E-MAIL ADDRESS (Optional: Work/Other): .....

I have a child(ren) in: (check all that apply):

6th Grade

7th Grade

8th Grade

**Return completed form with payment to "WSMS-PTA Member"  
Cash and checks gratefully accepted.  
Make checks payable to WSMS PTA.**