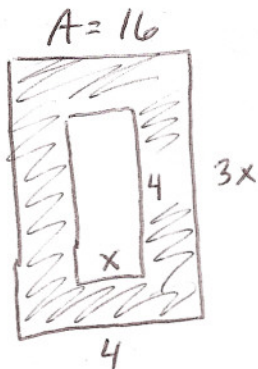


20.



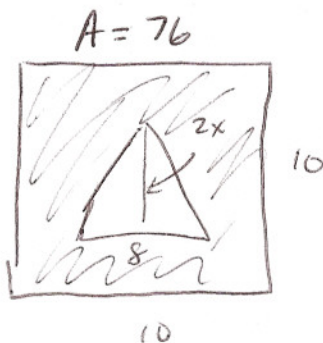
Rectangle - Rectangle
 $4(3x) - 4x = 16$

$$12x - 4x = 16$$

$$\frac{8x}{8} = \frac{16}{8}$$

$$x = 2$$

21.



Rectangle - Triangle
 $10(10) - \frac{8(2x)}{2} = 76$

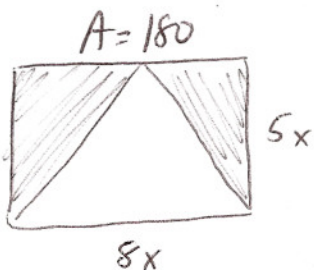
$$100 - 8x = 76$$

$$\begin{array}{r} -100 \\ \hline \end{array} \qquad \begin{array}{r} -100 \\ \hline \end{array}$$

$$\frac{-8x}{-8} = \frac{-24}{-8}$$

$$x = 3$$

22.



rectangle - triangle
 $5x(8x) - \frac{8x(5x)}{2}$

$$40x^2 - 20x^2 = 180$$

$$\frac{20x^2}{20} = \frac{180}{20}$$

$$\sqrt{x^2} = \sqrt{9}$$

$$x = 3$$