

**G
I
O
B
A
I
P
h
y
s
i
c
a
l
F
e
a
t
u
r
e
s**

Land Masses

- Antarctica
- Greenland
- Madagascar
- Sri Lanka
- Indonesian Archipelago
- Japanese Archipelago
- Philippine Archipelago
- New Zealand
- British Isles

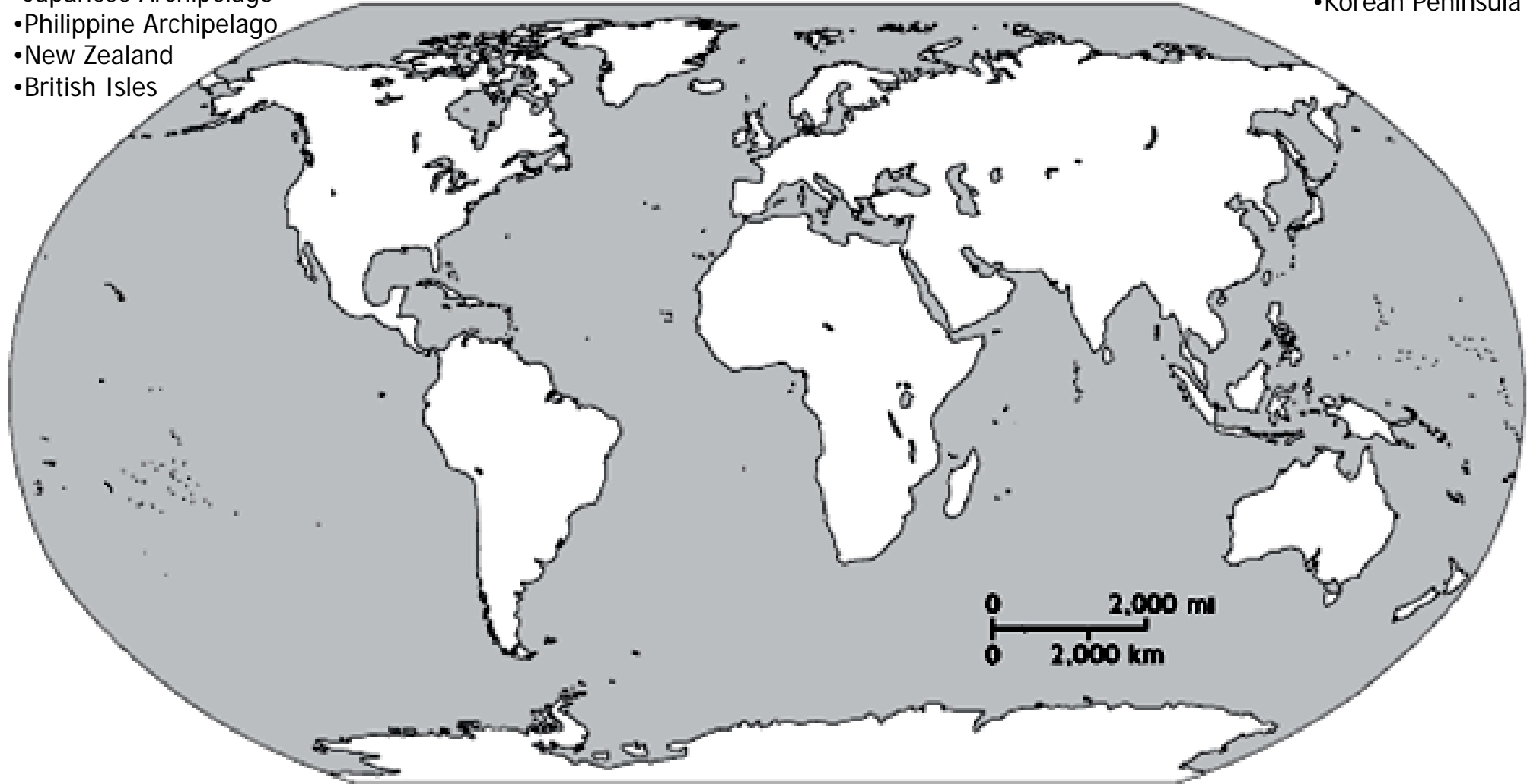
Mountains

- Alps
- Andes
- Appalachian
- Atlas
- Himalayans
- Ghats (E & W)
- Great Dividing Range
- Kunlun Shan
- Sierra Madres (Occidental & Oriental)

- Pyrenees
- Rockies
- Taurus
- Tian Shan
- Urals
- Zagros

Land Features

- Arabian Peninsula
- Atacama Desert
- Australian Outback
- Balkan Peninsula
- Canadian Shield
- Deccan Plateau
- Gobi Desert
- Great Plains (NA)
- Horn of Africa
- Northern Eur. Plain
- Saharan Desert
- Korean Peninsula



**G
l
o
b
a
l

P
h
y
s
i
c
a
l

F
e
a
t
u
r
e
s**

Oceans

- Arctic
- Atlantic
- Indian
- Pacific

Seas

- Adriatic
- Aegean
- Arabian
- Aral
- Baltic
- Bering
- Black
- Caribbean
- Caspian

- Coral
- East China Sea
- Java
- Labrador
- Mediterranean
- North
- Norwegian
- Philippine
- Red
- Sea of Japan

Rivers

- Amazon
- Congo
- Danube

- South China Sea
- Tyrrhenian
- Weddell
- Yellow
- Euphrates
- Ganges
- Huang Ho
- Indus
- Mississippi
- Nile
- Niger
- Tigris
- Yangtze
- Zambezi

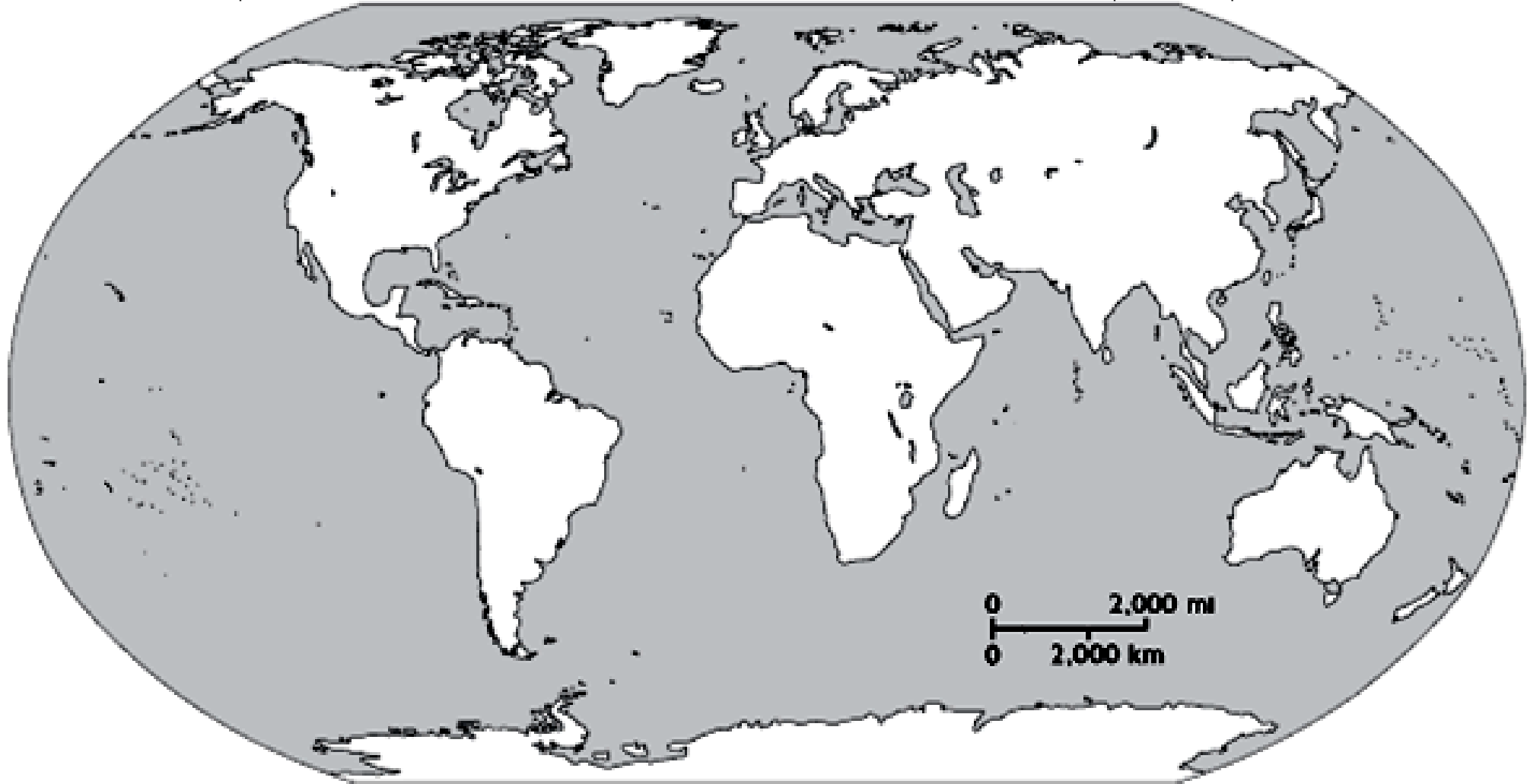
Misc. Water Features

- Bay of Bengal
- Bay of Biscay
- Bering Strait
- English Channel
- Gulf of Mexico
- Hudson Bay
- Persian Gulf
- Strait of Magellan
- Cape of Good Hope

- Strait of Malacca
- Strait of Ormuz

Man Made

- Panama Canal
- Suez Canal
- Grand Canal (China)



Early World Civilization Maps

Trace, label & color the following civilizations at their heights:

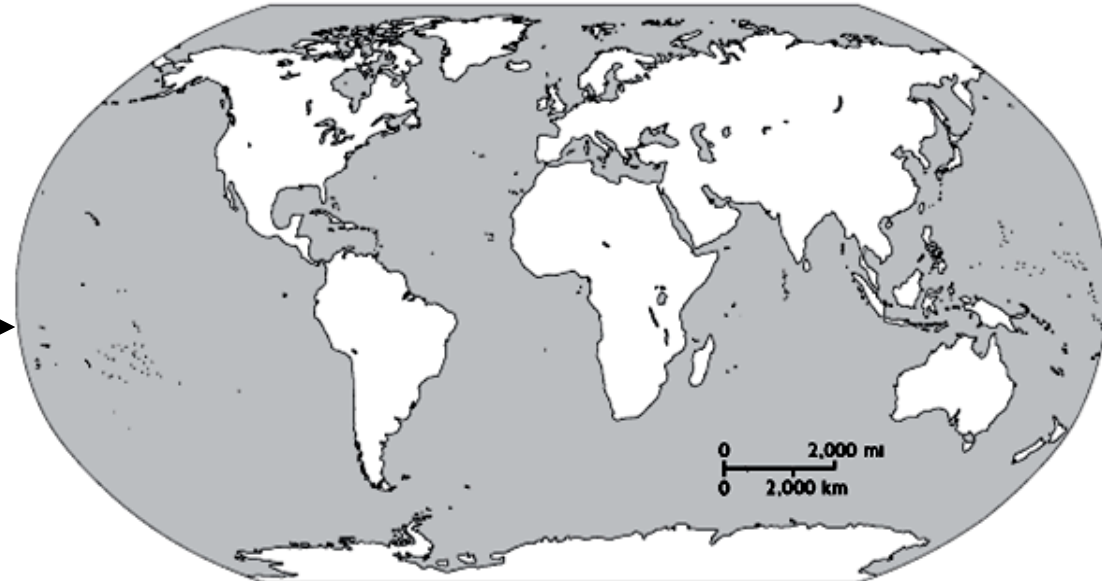


Ancient Civilizations

1. Shang/Zhou China—Huang (Red)
2. Sumerians—Mesopotamia (Yellow)
3. Egypt—Nile (Blue)
4. Harappa—Indus (Green)

Classical Civilizations

1. Roman Empire (Red)
2. Han China (Purple)
3. Mauryan India (Yellow)
4. Gupta India (Orange)
5. Greece (Brown)
6. Mayan (Black)



**G
I
O
b
a
I
R
e
g
i
o
n
s**

EXPLANATION:

AP World will require you to know a series of general, arbitrary regions around the world. It is extremely important that you know these regions by heart. Some may conflict with regional delineations that you learned in SOL World Geography. Regardless, these regions factor quite heavily on quizzes, tests, and the AP Exam in May! Use the key to the right to color code each of the regions marked on the map below as you wish. **MAKE SURE THAT YOU KNOW THE LIST OF COUNTRIES ASSOCIATED WITH EACH REGION!**

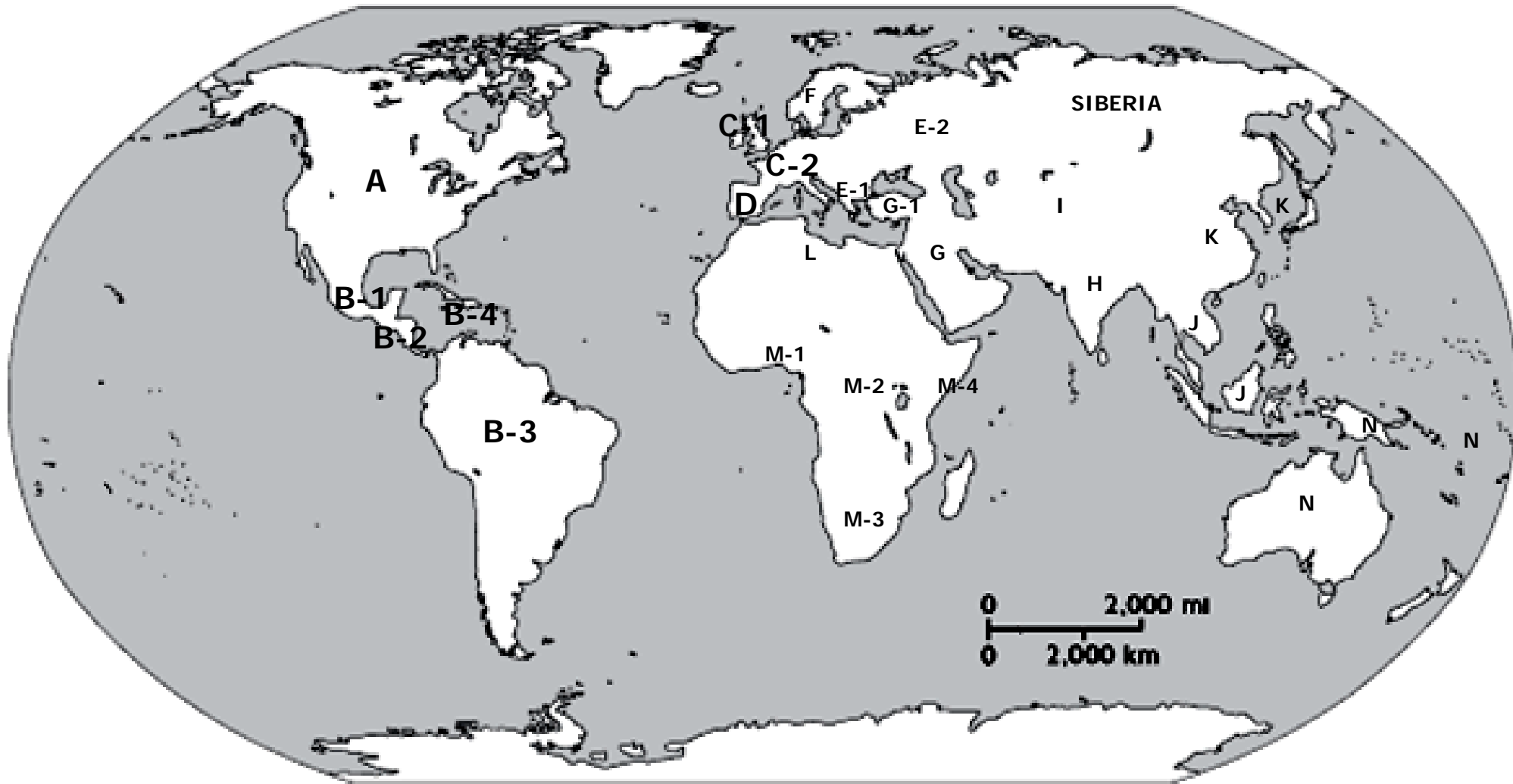
KEY

- A—North America
- B—Latin America
 - b-1. Mexico
 - b-2. Central America
 - b-3. South America
 - b-4. Caribbean

- C—Western Europe
 - c-1. British Isles
 - c-2. Continental
- D—Iberian Peninsula
- E—Eastern Europe
 - e-1. Balkans
 - e-2. Western Russia
- F—Scandinavia (N Eur.)

- G—Southwest Asia
 - g-1. Asia Minor (Anatolia)
- H—South Asia
- I—Central Asia
- J—Southeast Asia
- K—East Asia

- L—North Africa
- M—Sub Saharan Africa
 - m-1. West Africa
 - m-2. Central Africa
 - m-3. Southern Africa
 - m-4. East Africa/Swahili Coast
- N. Australia/Oceania



EXPLANATION:

AP World will require you to know a series of general, arbitrary regions around the world. It is extremely important that you know these regions by heart. Some may conflict with regional delineations that you learned in SOL World Geography. Regardless, these regions factor quite heavily on quizzes, tests, and the AP Exam in May! Use the key to the right to color code each of the regions marked on the map below as you wish. **MAKE SURE THAT YOU KNOW THE LIST OF KEY COUNTRIES ASSOCIATED WITH EACH REGION! YOU DO NOT NEED TO LABEL THE COUNTRIES ON THE SUMMER ASSIGNMENT MAP, BUT YOU MAY BE ASKED TO IDENTIFY THEIR LOCATIONS ON A MAP. THE LISTS ARE NOT DESIGNED TO BE COMPREHENSIVE, RATHER THEY PLACE A FOCUS ON SELECT COUNTRIES THAT WE DEAL WITH IN CLASS MOST FREQUENTLY.**

Key Nations

A—North America

USA
Canada

B—Latin America

b-1. Mexico

b-2. Central America
Guatemala
Panama
Nicaragua

b-3. South America
Columbia
Venezuela
Brazil
Argentina
Chile
Peru
Ecuador

b-4. Caribbean
Haiti
Dominican Rep.
Cuba
Jamaica

C—Western Europe

c-1. British Isles
Great Britain
Ireland

c-2. Continental
France
Netherlands
Germany
Switzerland
Austria
Czech Republic
Italy

D—Iberian Peninsula

Spain
Portugal

E—Eastern Europe

e-1. Balkans
Belarus
Poland
Ukraine
Slovakia
Hungary
Bulgaria
Croatia
Bosnia
Serbia
Greece
Romania

e-2. Western Russia

F—Scandinavia (N Eur.)

Norway
Sweden

G—Southwest Asia

Afghanistan
Israel
Jordan
Lebanon
Syria
Iraq
Iran
Kuwait
Saudi Arabia

g-1. Asia Minor
(Anatolia)
Turkey

H—South Asia

Bangladesh
India
Pakistan
Nepal

I—Central Asia

Kazakhstan
Uzbekistan
Kyrgyzstan
Tajikistan
Turkmenistan

J—Southeast Asia

Myanmar
Thailand
Cambodia
Laos
Vietnam
Malaysia
Indonesia
Philippines

K—East Asia

China
Korea (N & S)
Japan
Taiwan
Mongolia

L—North Africa

Egypt
Libya
Tunisia
Algeria
Morocco

M—Sub Saharan Africa

m-1. West Africa
Nigeria
Benin
Ghana
Liberia

m-2. Central Africa
Congo
Democratic Rep. of Congo
Cameroon
Sudan

m-3. Southern Africa
Angola
Namibia
South Africa
Zimbabwe

m-4. East Africa/Swahili Coast
Ethiopia
Somalia
Kenya
Tanzania

N. Australia/Oceania

Australia
New Zealand
Papua New Guinea