

“Beauty Is...”

Hey Kids! This year’s Reflection’s theme is “Beauty Is”. Let your inner artist shine through and participate in the National PTA Reflections Program. Brushy Creek students in pre-K through 5th grade are encouraged to create and submit works of art in six possible areas: Literature, Photography, Art, Music, Dance, and Video. Enter as many times and in as many areas as you would like. You can do it... your art work is BEAUTIFUL!

Simplified Reflections Rules Below: See Complete Rules at <http://www.txpta.org/programs/reflections/>. Complete Rules will also be available for each category in the Brushy Creek Library.

- **ENTRIES:** All Entries must be the original work of the student: The only help that parents can offer is to help complete the entry form and provide materials for their artist. **Use of copyrighted material is prohibited.** This includes the use of copyrighted cartoon characters in all entries.
- **DEADLINE:** Entries must be submitted to the BCE Library by Monday, Nov. 2! A parent AND student signed Entry Form needs to be submitted along with the Students Work - please attach (do not glue) to the back of the Students Work. Students can enter as many entries in as many categories as they would like. Entry forms are available in the BCE Library or on line in the Tuesday E-Folder (<http://schools.roundrockisd.org/brushycreek/>)
- **ARTIST STATEMENT:** The Artist Statement (on the Entry Form) is an important element in judging, don’t forget it!!
- **JUDGING:** Entries are judged on three criteria in this order: Interpretation of the Theme, Creativity, and Artistic Merit
- **DIVISIONS:** Entries will be judged in two divisions: Primary: preschool-grade 2 and Intermediate: grades 3-5

Visual Arts

- No art may exceed 24" x 30" including mat. Please see complete rules for Visual Arts.
- All work must be flat and should not exceed 3/8" thickness including mat. No three-dimensional work accepted.
- Mount artwork on sturdy posterboard or mat. Do NOT laminate work.
- Student’s name should be written on the back of the entry only. Secure with tape on back of art.

Photography

- Do not add lettering or graphics over the photo image please. Student’s name should be written on the back of the entry only!
- Mount print on sturdy material. Framed entries or multidimensional pieces are NOT accepted.
- Print or collage may not exceed 11" x 14" including mat.
- Place Entry Form in pocket protector and secure to back of piece with masking tape. Please see complete rules for photography.

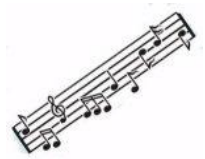


Musical Composition

- May be voice and/or instrument(s), lyrics are optional - May not exceed 5 minutes!
- No notation required for Preschool-Grade 5
- Student is not required to perform their own composition, may be performed by others
- Submit labeled audio cassette or CD in labeled container in an envelope with entry form attached with masking tape

Literature

- 2,000 words or less, with pages numbered
- Handwritten or typed, another person may help with typing but not with writing
- Size not to exceed 8 ½" by 11"
- STUDENTS NAME should only appear on the BACK of the pages.



Dance Choreography

- Must be original choreographed dance composition relating to this years Reflections theme, recorded on VHS or DVD.
- Student is not required to perform their own composition, may be performed by others - May not exceed 3 minutes!
- The Choreographer is not required to be or one of the performer(s). Costumes are not necessary but if used must be created by the choreographer.
- Please see full Rules for Dance for recording format rules and packaging entry information.

Film/Video

- Must be original works (fiction or nonfiction) relating to this years Reflections theme, recorded on CD or DVD. See complete rules.
- Categories for film include Animation, Narrative, Documentary, Experimental, Media/Computer –The title, composer and performer of any background music must be credited/documentated on official entry form. Entry may not exceed 5 minutes.
- Submit CD/DVD in plastic container placed in a large envelope. Label and complete form as directed in complete rules.

Please make your own copies to keep, as National PTA does not return Film, Dance, or Music production entries!! If you have any further questions, please email Stacey Bean at bean.stacey@gmail.com or call (512) 341-3774.