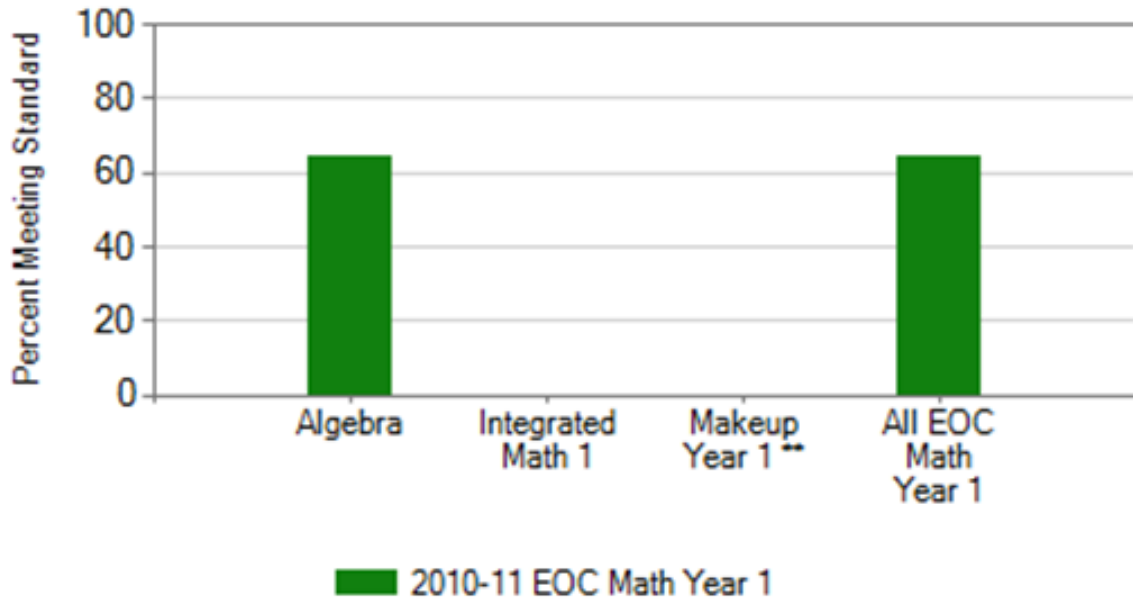


Lochburn Middle School End of Course (EOC) Highlights

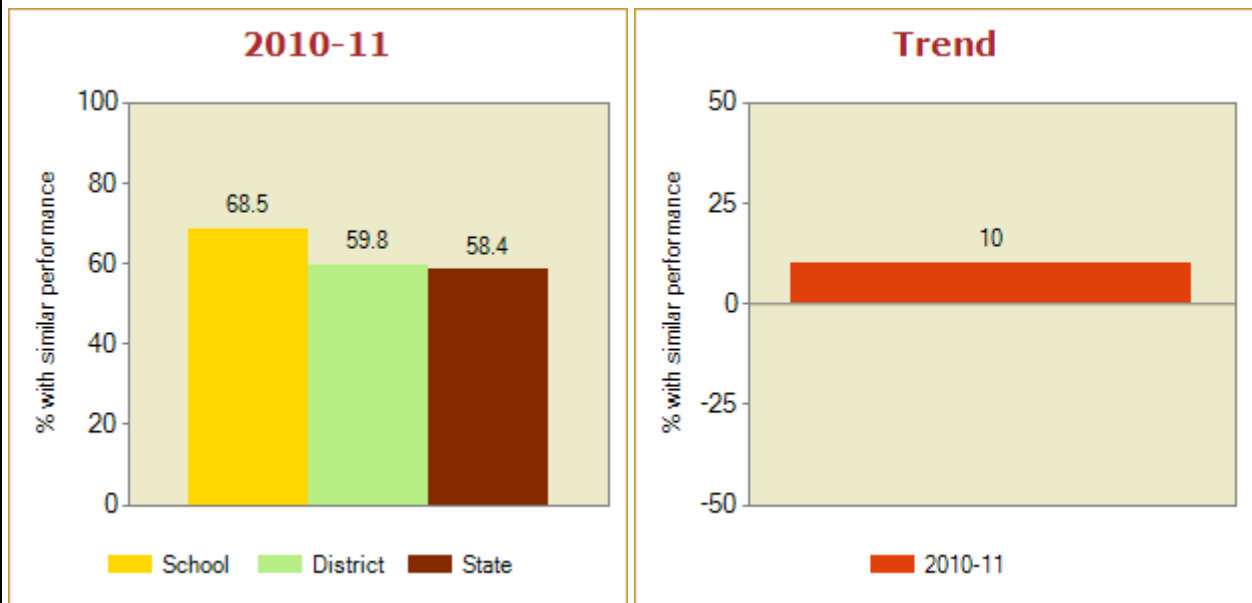
EOC Math Year 1



Lochburn Middle School End of Course (EOC) Highlights

Number, Operations, Expression and Variables

Compare, order real numbers; evaluate expressions; solve equations by expressing one variable in terms of the others.

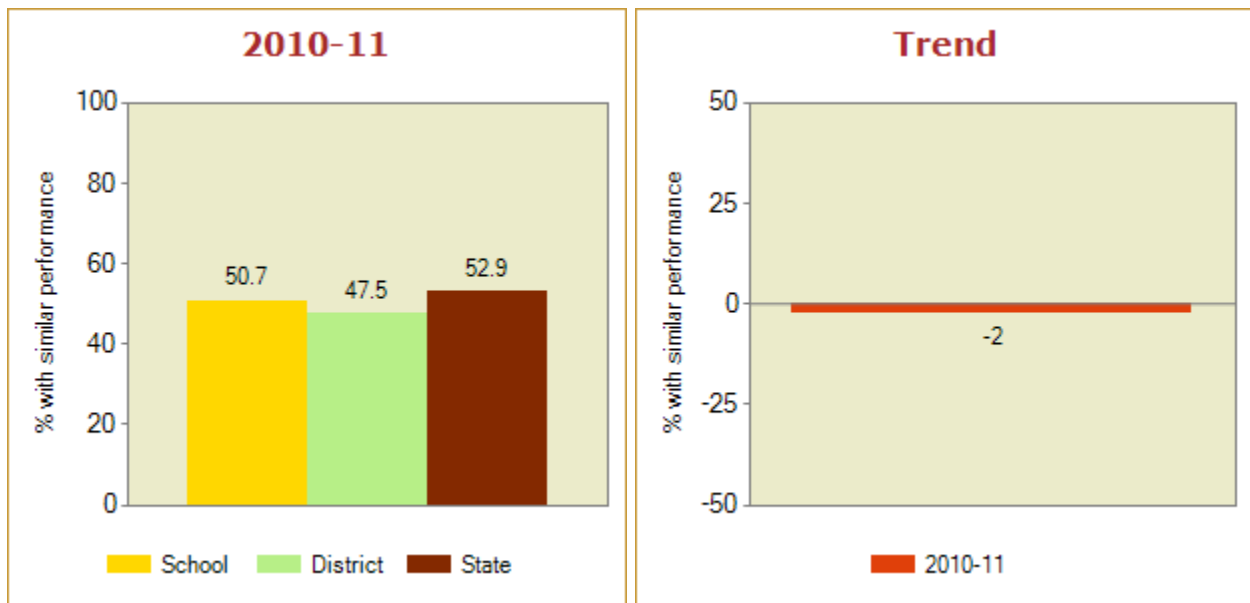


Lochburn Middle School has **68.5%** of students with performance in this strand, similar to or exceeding those who met the standard in this content area. This chart shows the difference between Lochburn Middle School and the state over time. For 2010-11, the difference is **68.5% - 58.4%**, or **10.1**.

Lochburn Middle School End of Course (EOC) Highlights

Linear Equations and Inequalities

Write, solve, graph linear equations, inequalities and systems of linear equations; translate between forms of linear equations; identify, interpret slope and intercepts of linear functions.

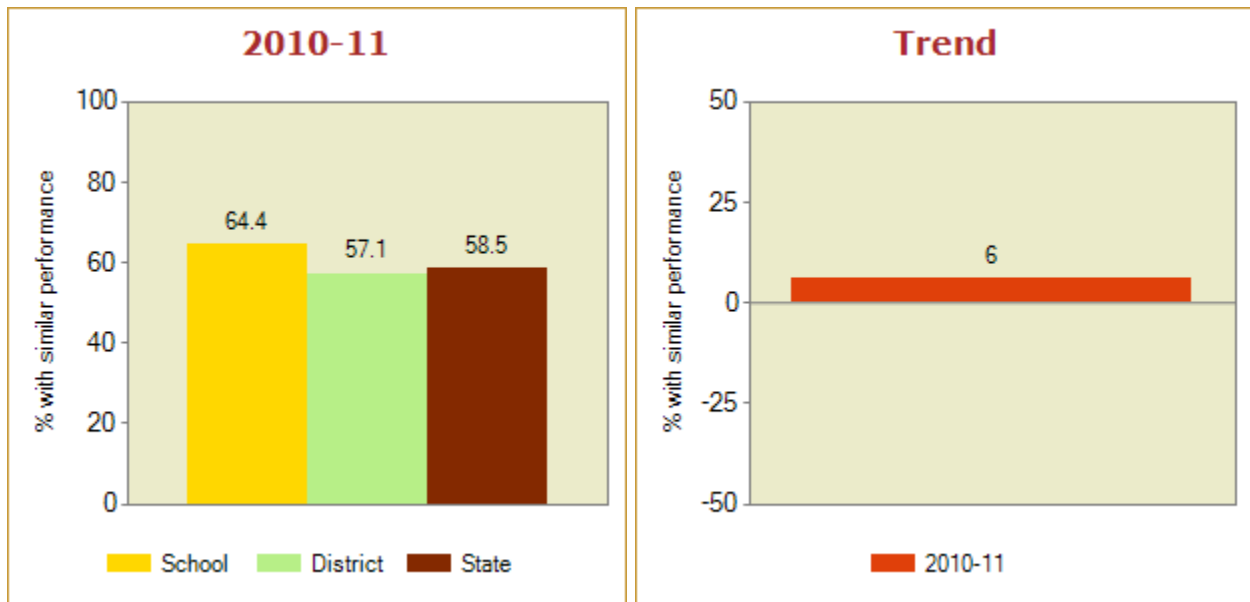


Lochburn Middle School has **50.7%** of students with performance in this strand, similar to or exceeding those who met the standard in this content area. This chart shows the difference between Lochburn Middle School and the state over time. For 2010-11, the difference is **50.7% - 52.9%**, or **-2.2**.

Lochburn Middle School End of Course (EOC) Highlights

Characteristics and Behaviors of Linear And Non-Linear Functions

Select functions to model and solve problems; describe characteristics of functions; describe how changes in parameters affect the graph of functions.



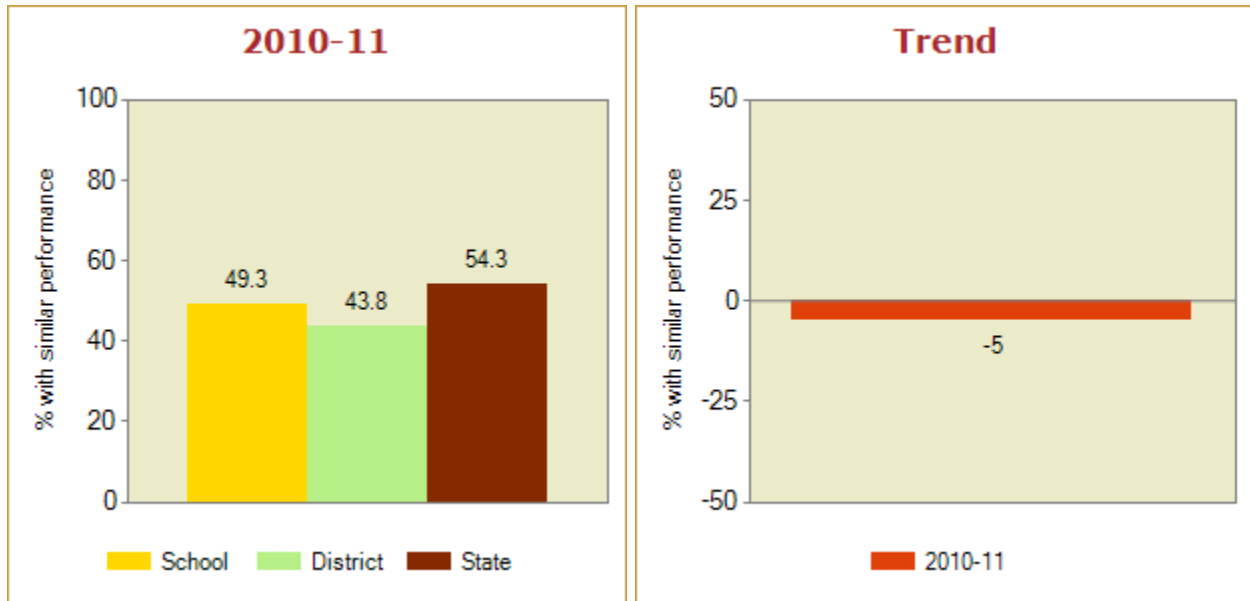
Lochburn Middle School has **64.4%** of students with performance in this strand, similar to or exceeding those who met the standard in this content area.

This chart shows the difference between Lochburn Middle School and the state over time. For 2010-11, the difference is **64.4% - 58.5%**, or **5.9**.

Lochburn Middle School End of Course (EOC) Highlights

Data and Statistics

Make, support conclusions; describe, compare data sets; use functions to make predictions.



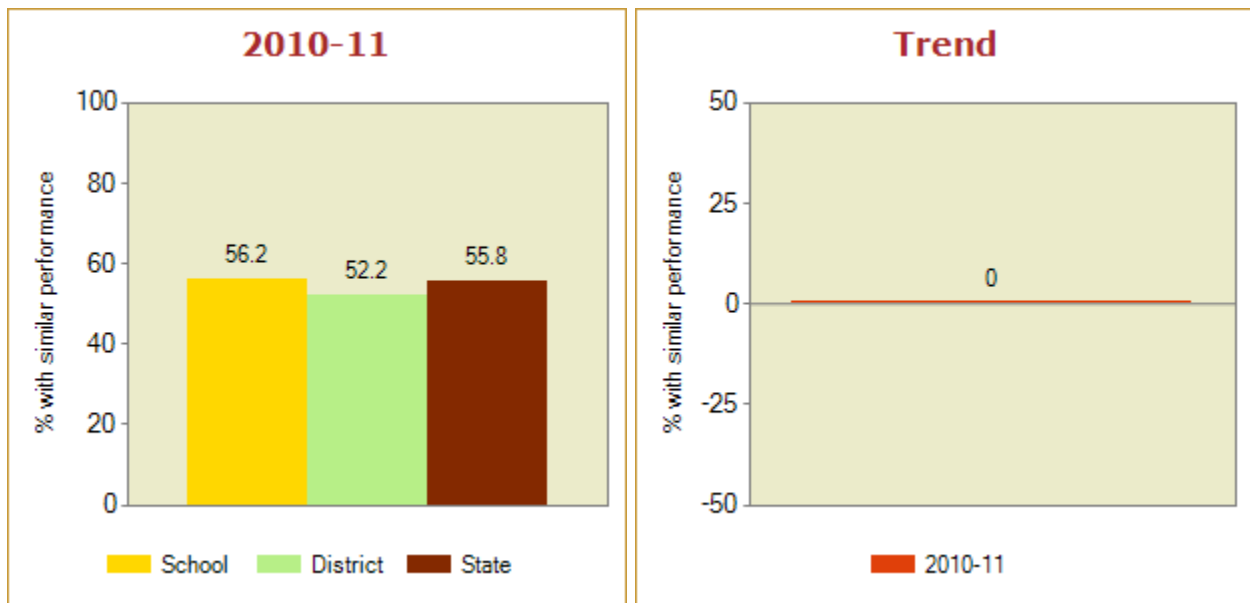
Lochburn Middle School has **49.3%** of students with performance in this strand, similar to or exceeding those who met the standard in this content area.

This chart shows the difference between Lochburn Middle School and the state over time. For 2010-11, the difference is **49.3% - 54.3%**, or **-5.0**.

Lochburn Middle School End of Course (EOC) Highlights

Course-specific Content

Use exponential decay functions to model and solve problems; solve problems represented by quadratic functions and equations.



Lochburn Middle School has **56.2%** of students with performance in this strand, similar to or exceeding those who met the standard in this content area. This chart shows the difference between Lochburn Middle School and the state over time. For 2010-11, the difference is **56.2% - 55.8%**, or **0.4**.