

# EAGLE EXPRESS



August 28, 2009

The Eagle Express is a publication of the CWE PTA. It is designed to keep you informed of all the happenings here at Cypress Woods Elementary.

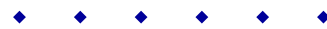
It is published every other Friday. The deadline for submission is the Friday prior to distribution. The next deadline for submission is September 4, 2009.

Submissions should be e-mailed to [stephressler@msn.com](mailto:stephressler@msn.com).



**Randy DeVries**  
Principal

**Stephanie Ressler**  
PTA President & Editor



Cypress Woods  
Elementary PTA  
4900 Cypress Woods  
Blvd.  
Palm Harbor, FL 34685

[www.teacherweb.com/FL/cypresswoodselementary/pta](http://www.teacherweb.com/FL/cypresswoodselementary/pta)  
727 538-7325

## A FEW WORDS FROM OUR PTA PRESIDENT...

Welcome to a new year at Cypress Woods Elementary! We have lots in store to make this a great year for the students, parents and staff at Cypress Woods.

We have two new board members this year and lot of great ideas. You can “meet” us on page three of this newsletter, but if you see us in school or out and about, please introduce yourself. If you ever have a question or concern, please feel free to e-mail or call any of us.

One of the first changes we made was to forego the “PTA Packet” and have all the important information you need to know available in our newsletter. Our newsletter comes out every other week so you can stay up to date with PTA events. If you ever miss a newsletter, you can find them on our website.

Please take a careful look at the back of the newsletter and what is attached. Instead of separate forms, we have cut-out forms for School Directory and T-shirt Orders. Also you can find our membership form attached to the newsletter. The sooner you can submit these forms the sooner you can get involved in PTA and we can get to work!

Mr. DeVries is looking for parents to become involved on school committees. It is a great way to learn more about the school and give your opinion. I served on the SEM committee last year and it was so rewarding to see SEM grow from a concept to a working program the kids loved. If you are interested in serving on committees such as School Advisory Council, Schoolwide Enrichment, Character, Beautification, Curriculum or Technology please let me or Mr. DeVries know.

We are also hard at work planning our first ever Golf Tournament. It will be **October 3rd** and registration will begin at 12:00pm. If you want to get involved, please contact Debbie Bechtel at [Deborah.becht@becfs.com](mailto:Deborah.becht@becfs.com) or 647-6355.

We will be celebrating Grandparents Day on **September 11th**. Please invite all grandparents at the children’s lunch time for a special treat!

If you have any questions or comments, please do not hesitate to contact us. We would love to hear from you. And if you would like to help, we would love to have you join us in continuing to make CWE the best!

Stephanie Ressler, PTA President  
[stephressler@msn.com](mailto:stephressler@msn.com) or 772-6734

## ANGEL BACKPACKS

What is Angel Backpacks? It is part of our Angel Program, where PTA collects and distributes backpacks and school supplies to kids who need them, starting with students at Cypress Woods Elementary.

We will then be reaching out to Sandy Lane Elementary by forming a partnership with them and supporting them throughout the year. This school in Clearwater is a Title I school, identified in need of improvement. The kids and school really need our help and support and we know our students will benefit from the satisfaction of helping others in need. We are collecting backpacks and other school supplies through next week in the front office area of the school and the North Pinellas YMCA. If you would like to get involved with our Angel project in any way, please contact Leona Wells.



Leona Wells, Angel Backpacks Chair  
Leona@thewellsfive.net or 935-5039

## GRANDPARENTS' DAY

We invite all our grandparents for a special celebration **September 11th**. Please stop by the multi-purpose room at your grandchild's lunch time for a special treat so PTA can show you how we appreciate our grandparents!

Any parents who want to help out during this special day, please contact Denise Sutter. We look forward to seeing you there!

Denise Sutter, Hospitality Chair  
dsutter1@tampabay.rr.com or 942-7134

## MEMBERSHIP EARLY BIRDS

We are off to great start with memberships and received a great response from our kindergarten welcome. Don't forget to submit your PTA membership today through the attached envelope. Membership is \$6.00 for a single membership and \$10.00 for a family membership. Why is it important to join PTA? We have several reasons:

You will receive a discount card filled with local businesses that is exclusive to PTA members. Being a member of PTA keeps you connected to your school and exposes you and your child to great resources and programs. PTA offers a way for parents to tap into a network of like-minded parents who care about their child's education and their school's continued improvement.

Right now we are having an early bird contest. Memberships submitted by **September 4th** will be entered into a drawing for some great prizes, so please send in yours today!

Amy Dougherty, Membership Chair  
amydoc@tampabay.rr.com or 784-8949

Cypress Woods PTA has scheduled several family day/evening events throughout the school year. We look forward to these events and wouldn't want you to miss them. Below are dates to mark on your calendar...

### Astroskate Night 6:00-8:00pm

Thursday, September 17  
Thursday, November 19  
Thursday, February 18  
Wednesday, May 19

### Chuck E. Cheese Night 3:00 - 9:00pm

Tuesday, December 8  
Wednesday, March 3

### Chick-fil-A "Spirit Day" 6:00am - 10:00pm

Thursday, October 15  
Wednesday, January 20  
Thursday, April 15



## GET CONNECTED

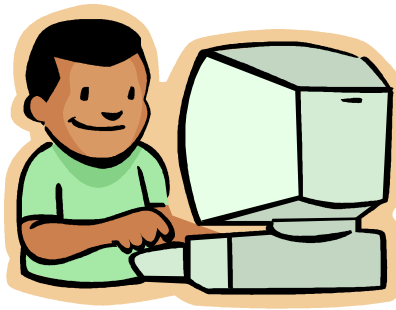
[www.teacherweb.com/FL/cypresswoodselementary/pta](http://www.teacherweb.com/FL/cypresswoodselementary/pta)

Put this site on your favorites list and check often for:

- Upcoming Events & Programs
- School Calendar
- Contact Information
- Important resources regarding your child's education!

Be sure to sign up for our email NEWSFLASH!

Brooke Pickard, Website Chair  
stodd22@tampaaby.r.com or 939-8520



## MEET YOUR BOARD

### Stephanie Ressler, President

Stephanie is stay at home mom to two kids at Cypress Woods Elementary. Besides her hobbies of sewing and scrapbooking she works as a substitute teacher at the school. This is the fourth year she has served on the CWE PTA Board.

### Marcie Schultz, 1st VP

Marcie Schultz is a former elementary teacher who knows the importance of parent involvement and the PTA. She has served on the CWE PTA for 3 years of which the past 2 she has held a board position. She has a third and first grader at CWE. In her free time she enjoys ice skating, reading and scrapbooking.

### Dee Nasr, Treasurer

Dee grew up in Chicago but has lived here for 22 years. She has three kids; two currently attend Cypress Woods. In her free time she enjoys the theater, sports and music. Although this is her first year on the board at CWE, she has previous served as a PTA President.

### Debbie Bechtel, Secretary

Debbie was born and raised in this area. Her previous life included working as a news producer but now her true passion is helping children. She has two children of her own; one who attends CWE. This is her first year as board member and she is excited to work with the parents, administration and staff of Cypress Woods!

## FIRST GENERAL MEETING: SEM!

Our first PTA General Meeting will be Thursday, **September 24th** at 6:30pm in the cafeteria. It is important for you to attend for several reasons.

First, you can learn about what PTA does and how you can get involved. We have several new projects in the works and we would love some enthusiastic hands to get them off the ground.

Mr. DeVries is also planning a presentation on SEM. Come learn about this great program and the effects it has on kids. After you learn about it, I promise you will want to become more involved!

If you have any questions, please contact Stephanie Ressler at [stephressler@msn.com](mailto:stephressler@msn.com) or 772.6734. We look forward to seeing you there!

## THANK YOU



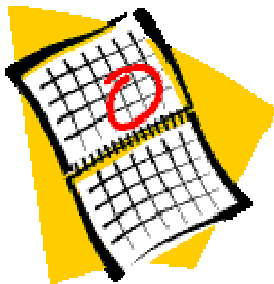
Without the support of local businesses, the PTA could not do all that we do for the students, parents and staff at Cypress Woods Elementary.

Thank you to **Publix Supermarkets, Chili's** and **Starbucks** (in Ridgemoor) for their donations to our Welcome Back Breakfast for the teachers and staff.

Thank you to **Pinch-a-Penny** for donating pool toys as prizes for our kindergarten raffle.

## MARK YOUR CALENDAR

- ◆ September 4th—PTA Early Board Memberships due
- ◆ September 11th—School Directory and School Spirit forms due/Grandparents Day
- ◆ September 17th—PTA Board Meeting 1:30pm
- ◆ September 17th—Astroskate
- ◆ September 24th—PTA General Meeting 6:30pm



## Your PTA Board

**Stephanie Ressler**  
President

**Marcie Schultz**  
1st Vice President

**OPEN**  
2nd Vice President

**Deborah Bechtel**  
Secretary

**Deanna Nasr**  
Treasurer

## SCHOOL DIRECTORY

Our school directory is a service provided by PTA so that students can keep up with their friends outside of school. This year we are attempting to go paperless, so your class directory will be e-mailed and updated as needed. Please complete and return to Brooke Pickard, Website Chair, by **September 11th** to be sure your child is included!.

**CWE PTA Directory Form**

Child's Name: \_\_\_\_\_ Teacher: \_\_\_\_\_

Parent/Guardian Name: \_\_\_\_\_

Address: \_\_\_\_\_

City: \_\_\_\_\_ Phone: \_\_\_\_\_

E-Mail: \_\_\_\_\_

Yes, I'll help save a tree, please e-mail me my class directory!

## SCHOOL SPIRIT

School shirts are here! You don't want to miss out on these groovy shirts so order yours today. Be sure and wear it each Friday because one Friday a month students showing their school spirit will receive a prize! Please return the order form with cash or check to Joan Spies, T-shirt Chair, by **September 11th**.



**CWE PTA School Spirit Order Form**

Child's Name \_\_\_\_\_ Home Phone \_\_\_\_\_

Teacher \_\_\_\_\_ Amount Enclosed: \_\_\_\_\_

2009/2010 CWE T- shirt (Blue Tie-Dye)

Youth \$12.00 Small \_\_\_\_\_ Medium \_\_\_\_\_ Large \_\_\_\_\_

Adult \$12.00 Small \_\_\_\_\_ Medium \_\_\_\_\_ Large \_\_\_\_\_ X-Large \_\_\_\_\_

Car Magnet \$3.00 each or 2 f or \$5. 00 \_\_\_\_\_